



MPP26 Right-Angle Gearmotor

MobilePower™ Series

Low Voltage - High Torque

ElectroCraft's MPP26 integrates a 4-pole PMDC brush motor with a heavy duty 2-stage right-angle worm gearbox, designed for industrial applications, adding industrial grade cabling plus encoder feedback options to support positioning capability.

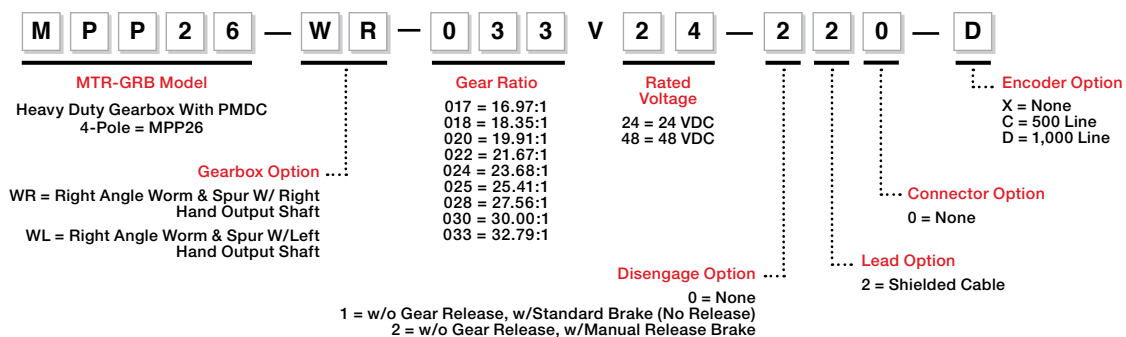
ElectroCraft MobilePower™ gearmotors feature an integrated design that provides increased performance and reliability at an affordable price compared to traditional motor/gearbox combinations. As with all ElectroCraft products, MobilePower™ gearmotors are customizable to meet specific application requirements.

Features:

- Smooth, efficient motion
- Durable and highly reliable integrated worm-gear design
 - Suitable for uneven terrain and curb-climbing
- High starting torque:
 - Peak starting torque up to 144.89Nm
 - 15-minute continuous torque up to 39.2Nm
- Configurable or completely customizable designs
 - Motor, gearbox, brake, encoder, cabling

Typical applications:

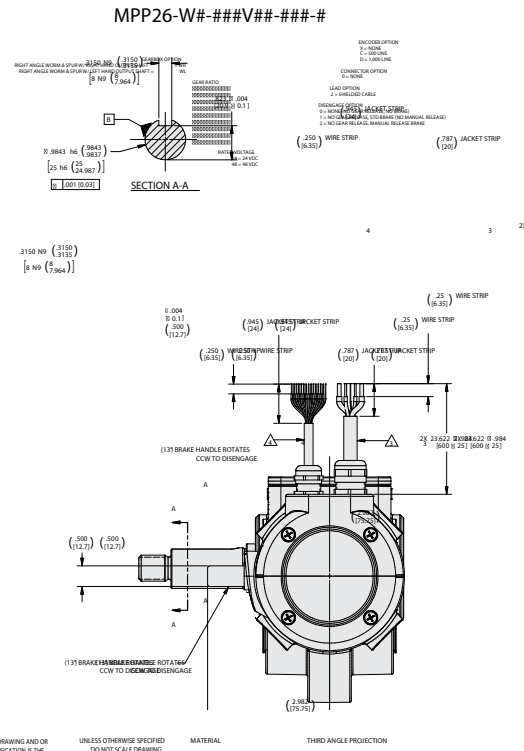
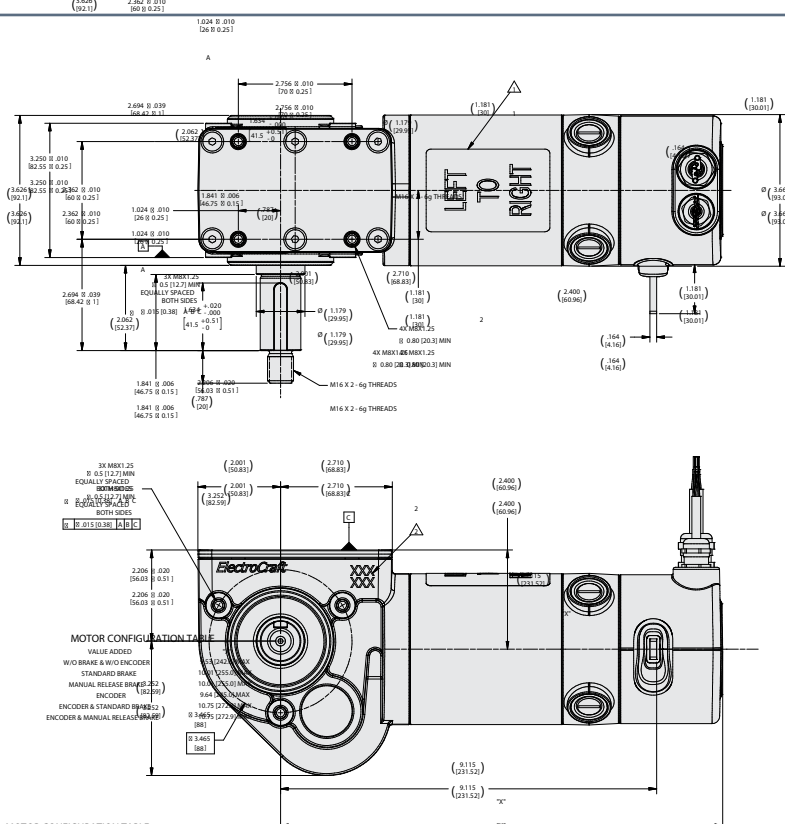
- Industrial traction applications
- Industrial lifts
- Automated Guided Vehicles
- Autonomous Mobile Robots



MPP26 ElectroCraft MobilePower™

MobilePower™ Series

Low Voltage - High Torque



MOTOR CONFIGURATION TABLE

VALUE ADDED	"X"
MOTOR CONFIGURATION TABLE	18.01 (242.0) MAX
STANDARD BRAKE	10.00 (254.0) MAX
MANUAL RELEASE BRAKE	9.84 (250.0) MAX
ENCODER	10.75 (273.0) MAX
ENCODER & STANDARD BRAKE	9.84 (250.0) MAX
ENCODER & MANUAL RELEASE BRAKE	10.75 (273.0) MAX
ENCODER & MANUAL RELEASE BRAKE	9.84 (250.0) MAX

MPP26 Mechanical / Winding Data

Gear Ratio	32.79:1	30.00:1	27.56:1	25.41:1	23.68:1	21.67:1	19.91:1	18.35:1	16.97:1
Operating Voltage (VDC)	24								
No Load Speed (RPM)	122	133	145	157	169	185	201	218	236
Peak Torque (Nm)	144.89	132.56	121.78	112.28	104.63	95.75	87.97	81.08	74.98
Peak Current (Amps)	100								
Peak Power (Watts)	1214								
S2 Torque (15 min) (Nm)	39.20	35.87	32.95	30.38	28.31	25.91	23.80	21.94	20.29
S2 Current (15 min) (Amps)	30.0								
S2 Power (15 min) (Watts)	445								
S1 Torque (Continuous) (Nm)	12.03	11.00	10.11	9.32	8.69	7.95	7.30	6.73	6.22
S1 Current (Continuous) (Amps)	12.0								
S1 Power (Continuous) (Watts)	148								
Torque Constant (Nm/A)	0.0568								
Voltage Constant (V/KRPM)	5.95								
Motor Inertia (Armature) (kg.mm ²)	1129.23								
Motor Winding Resistance (Ohms)	0.3								
Motor Winding Inductance (µH)	73								
Motor Max Winding Temp (°C)	155								
Motor Poles	4								
Motor Mass (kg)	7.48 (MPP26), 7.17 (MPP36)								

Notes:
 Gear Motor specifications (torque, current, power) are reference values based on 25°C operating temperature.
 Do not apply maximum current for more than 5 seconds or more than twice without 10 minutes between cycles



Your Genius. Our Drive.

ElectroCraft, Inc.
 2 Marin Way, Suite 3
 Stratham, NH 03885-2578 USA

Tel: (844) 565-6144

Email: sales@electrocraft.com
 www.electrocraft.com

MPP26 ElectroCraft MobilePower™

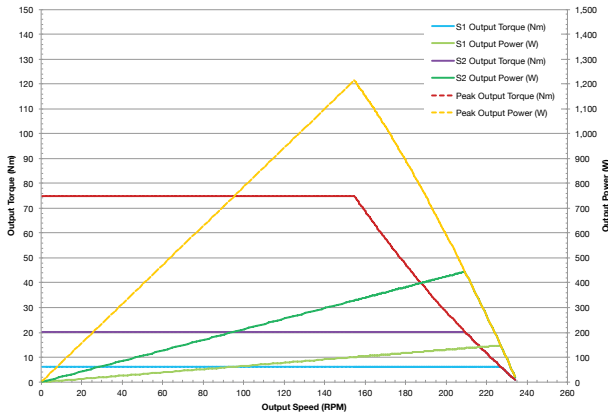
MobilePower™ Series

Low Voltage - High Torque

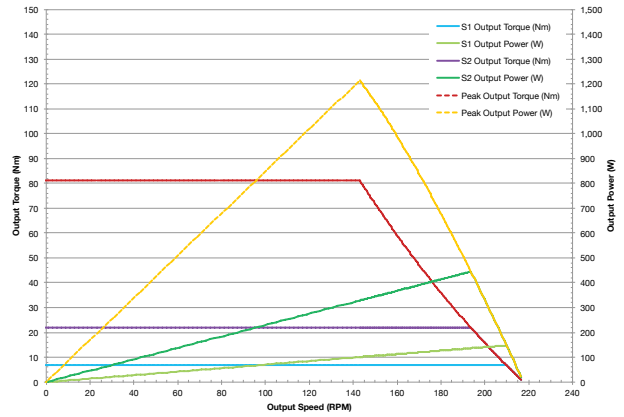


MPP26 Motor Performance

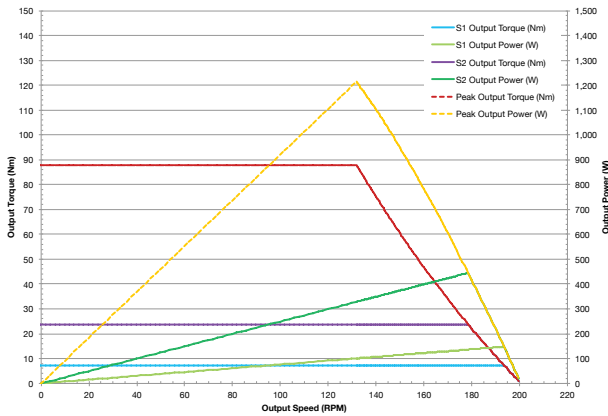
16.97:1 Ratio



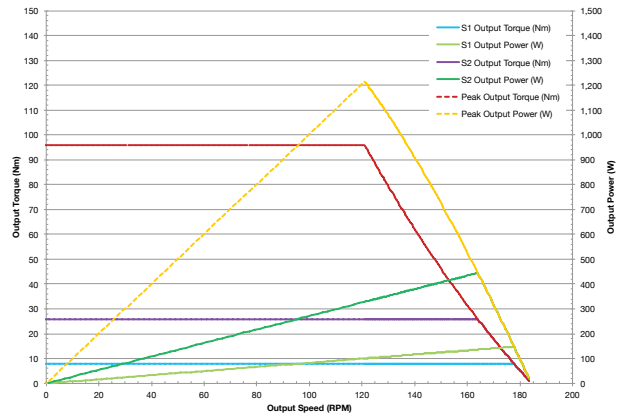
18.35:1 Ratio



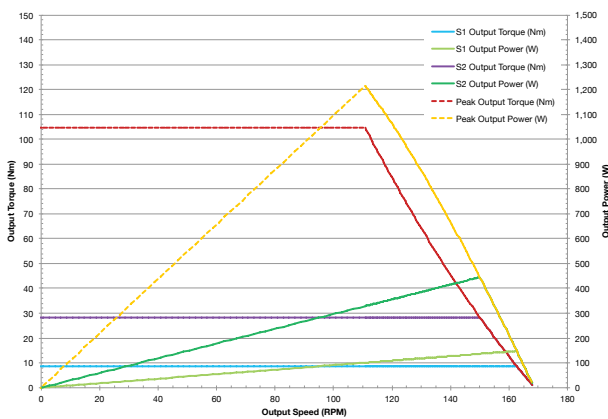
19.91:1 Ratio



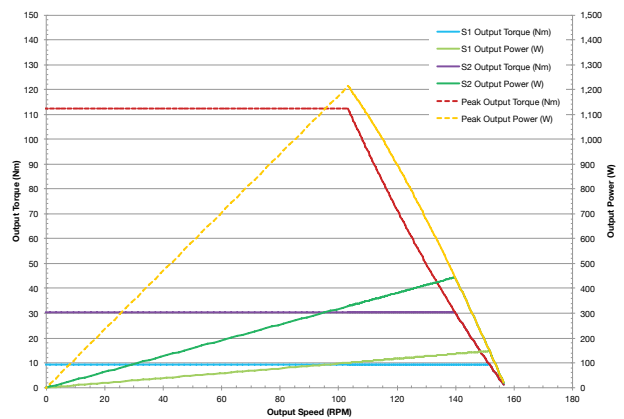
21.67:1 Ratio



23.68:1 Ratio



25.41:1 Ratio



Your Genius. Our Drive.

ElectroCraft, Inc.
2 Marin Way, Suite 3
Stratham, NH 03885-2578 USA

Tel: (844) 565-6144

Email: sales@electrocraft.com
www.electrocraft.com

MPP26 ElectroCraft MobilePower™

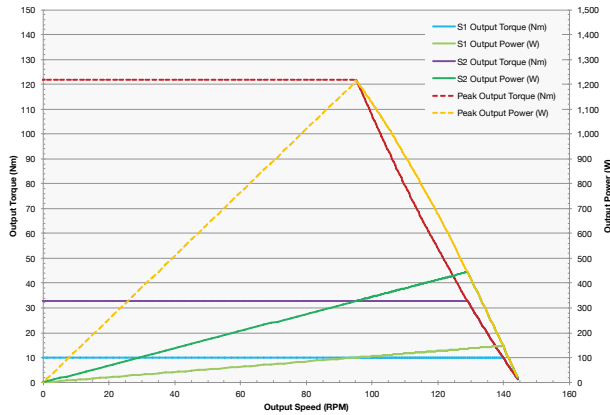
MobilePower™ Series

Low Voltage - High Torque

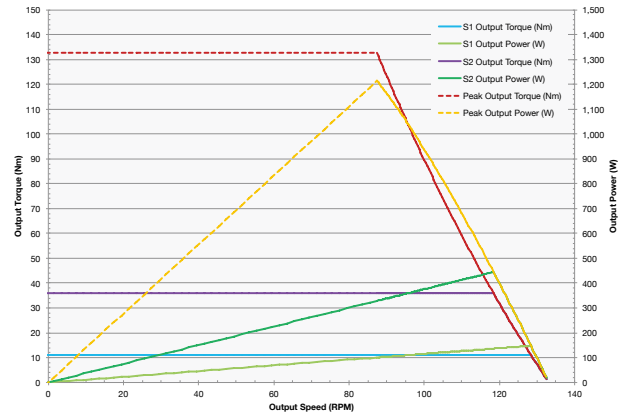


MPP26 Motor Performance Cont.

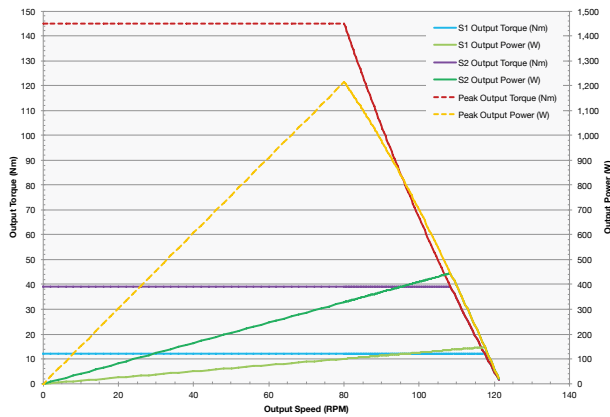
27.56:1 Ratio



30.00:1 Ratio



32.79:1 Ratio



Your Genius. Our Drive.

ElectroCraft, Inc.
2 Marin Way, Suite 3
Stratham, NH 03885-2578 USA

Tel: (844) 565-6144

Email: sales@electrocraft.com
www.electrocraft.com